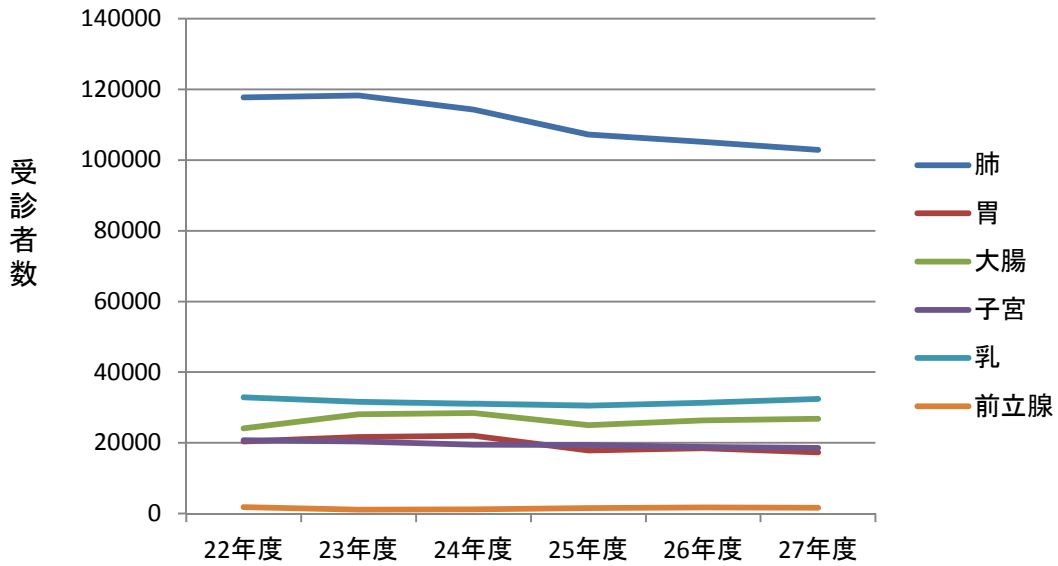
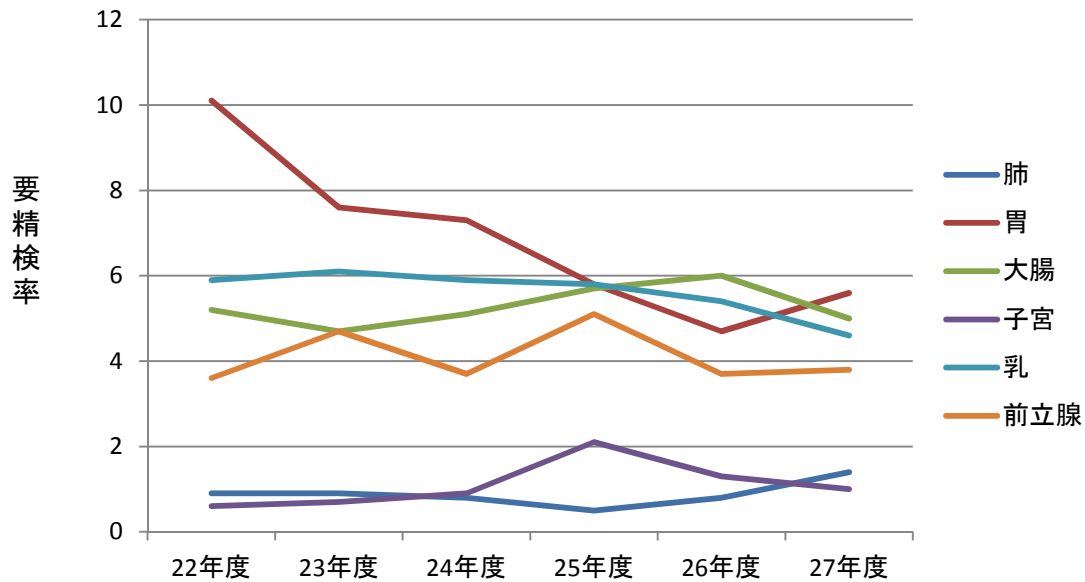


平成27年度がん検診成績

受診者数

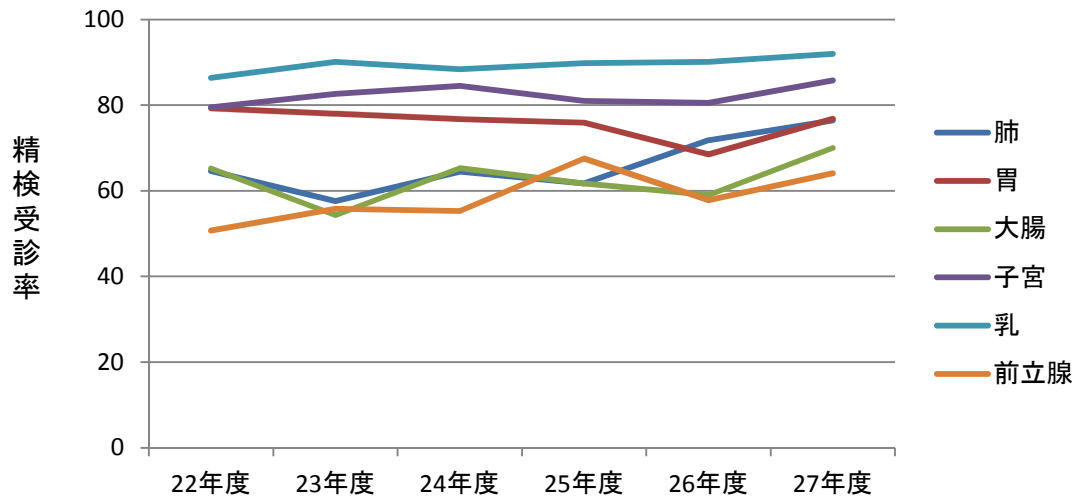


要精検率



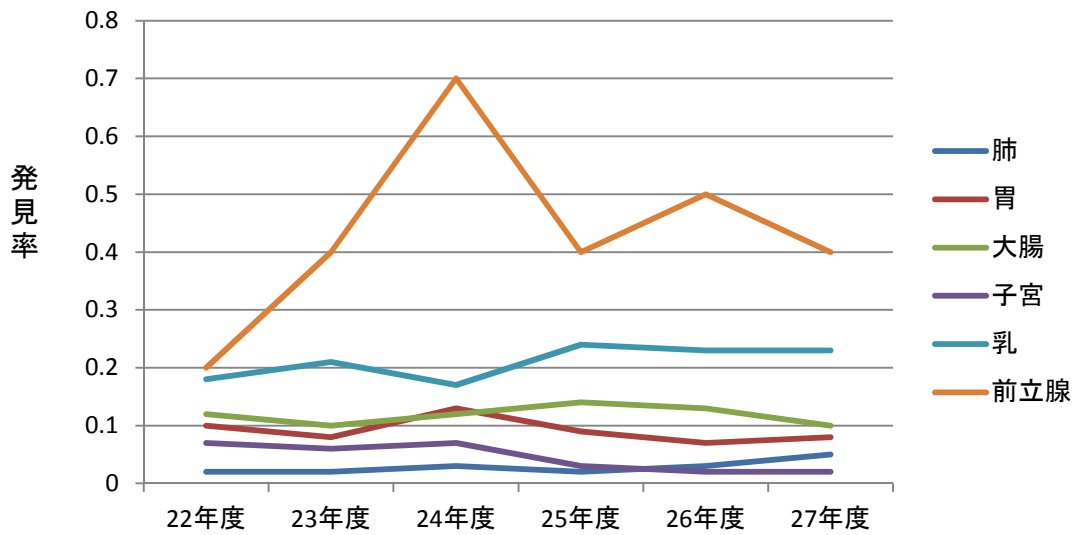
$$\text{要精検率} = \frac{\text{要精検者数}}{\text{受診者数}} \times 100$$

精検受診率



$$\text{精検受診率} = \frac{\text{精検受診者数}}{\text{要精検者数}} \times 100$$

がん発見率



$$\text{がん発見率} = \frac{\text{がん発見者数}}{\text{受診者数}} \times 100$$